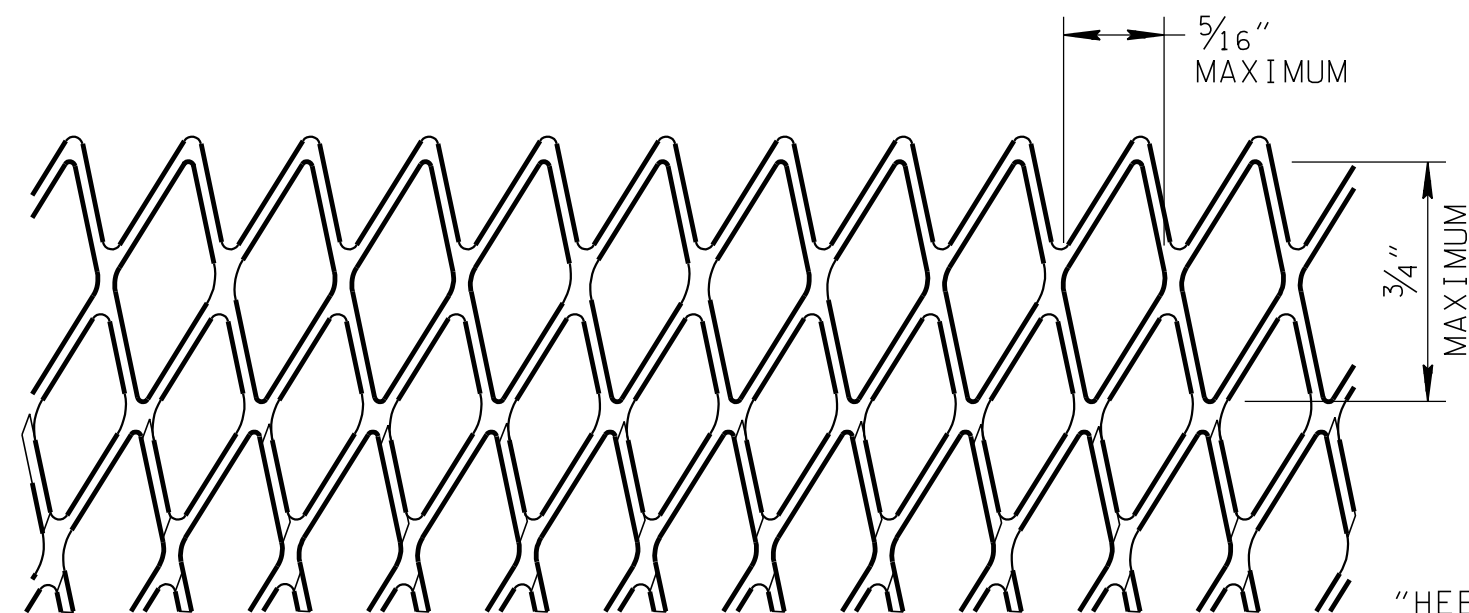
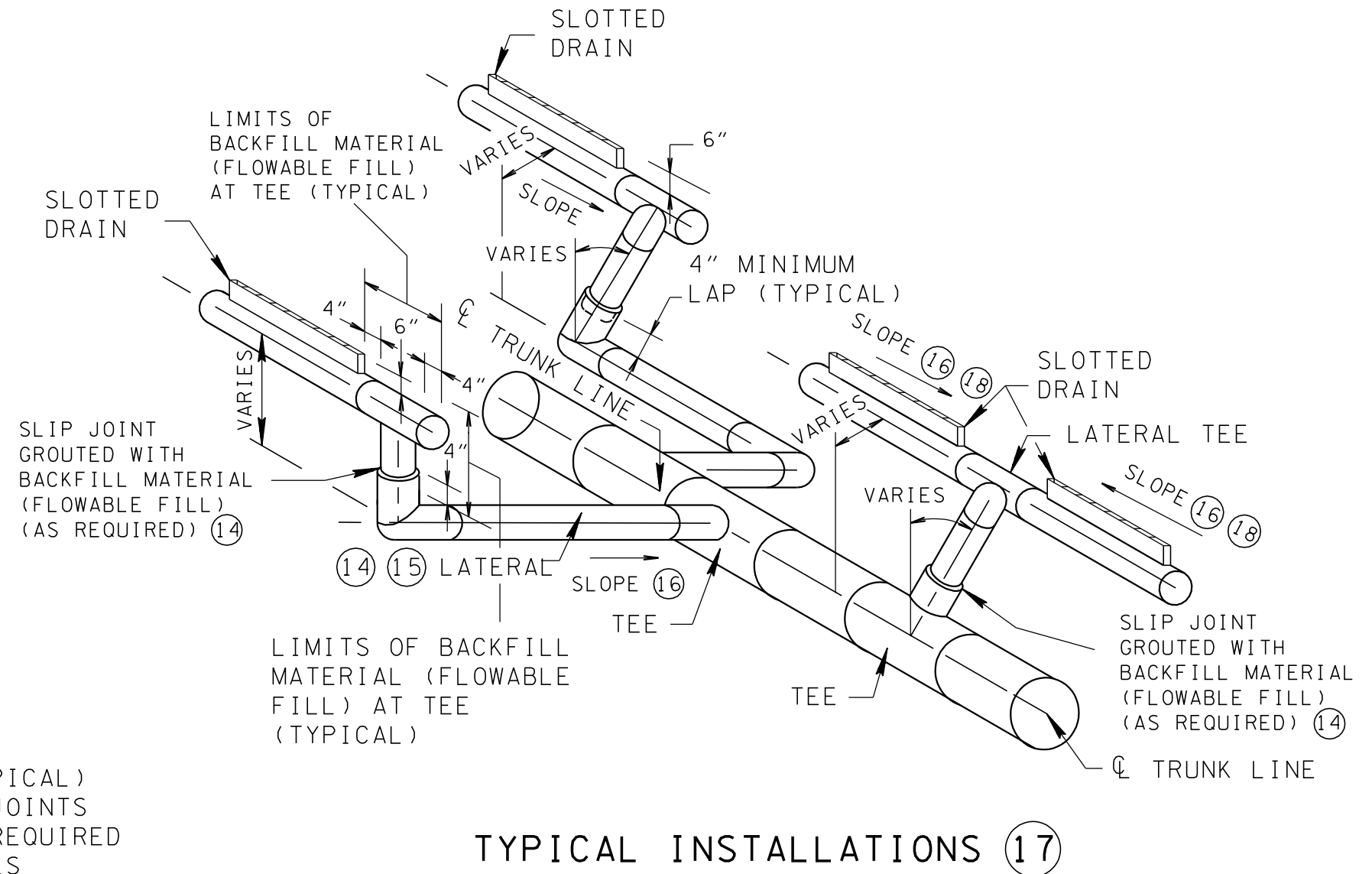
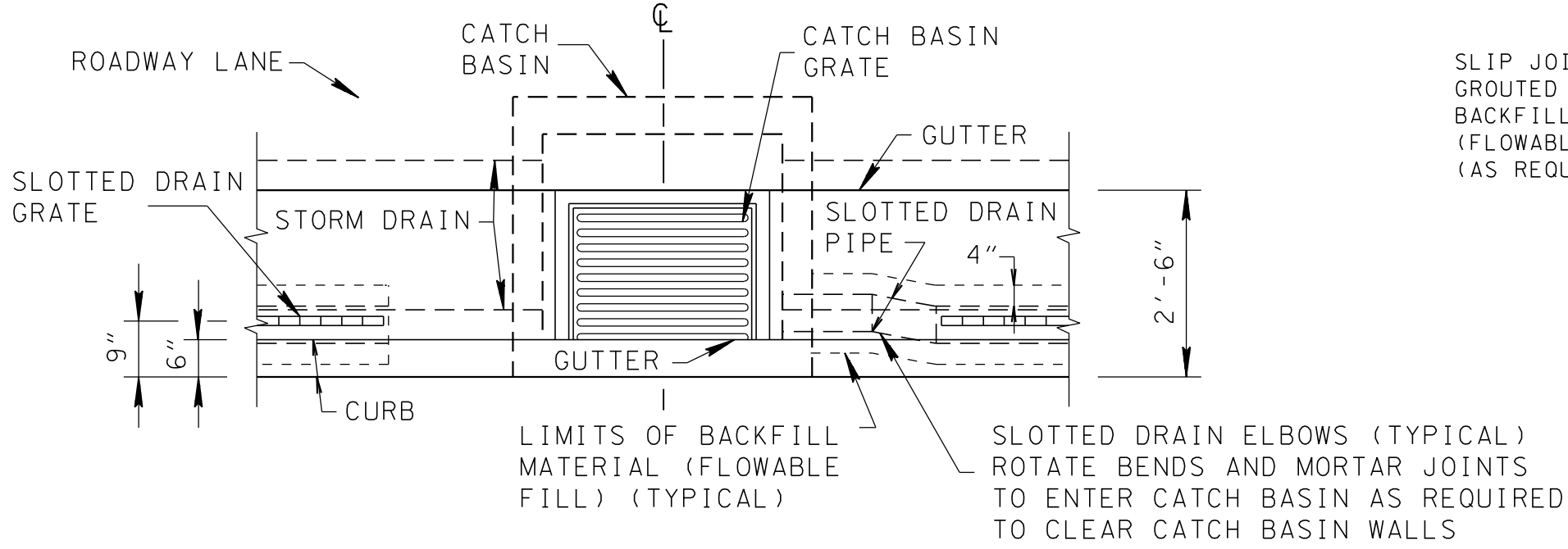
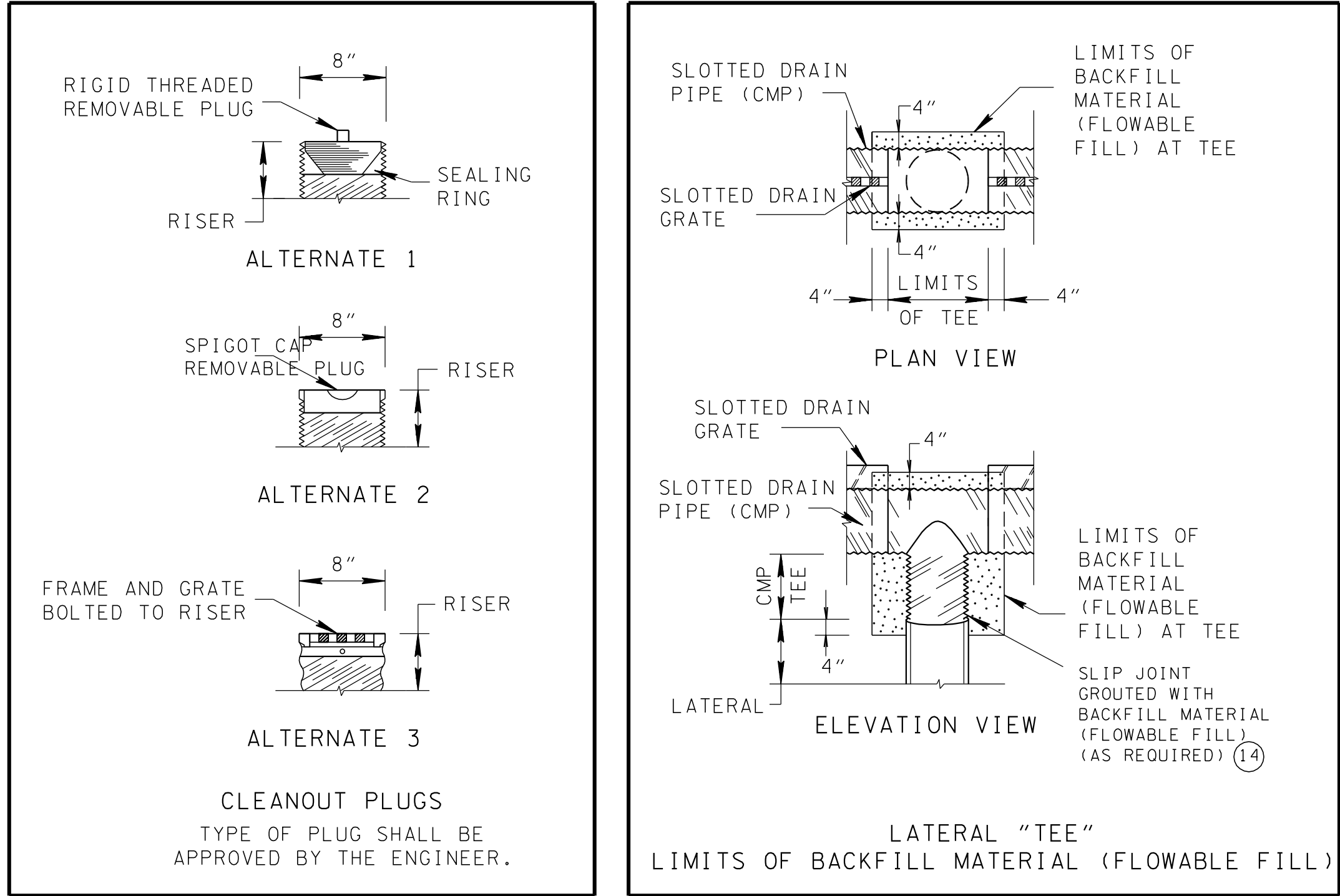
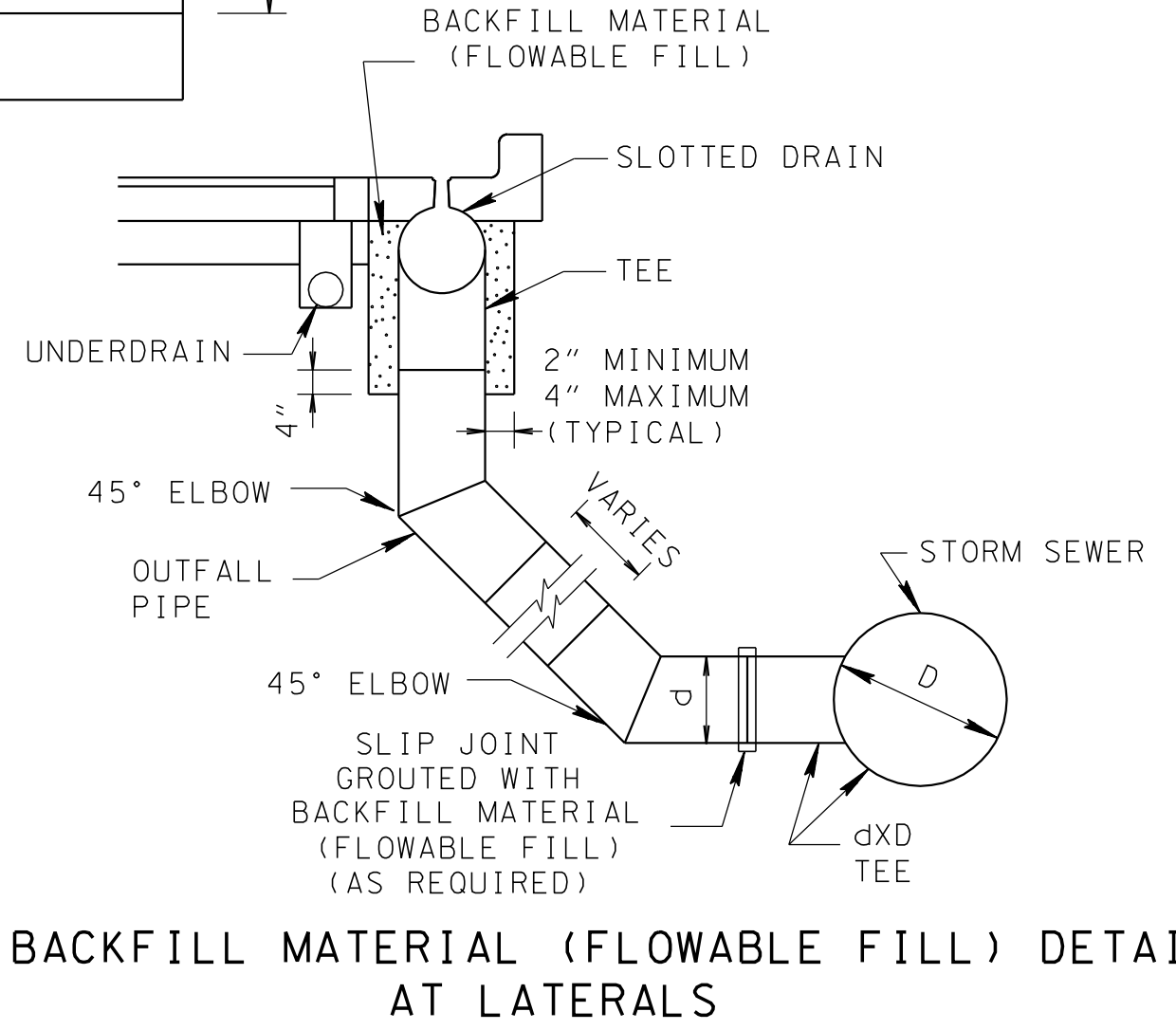
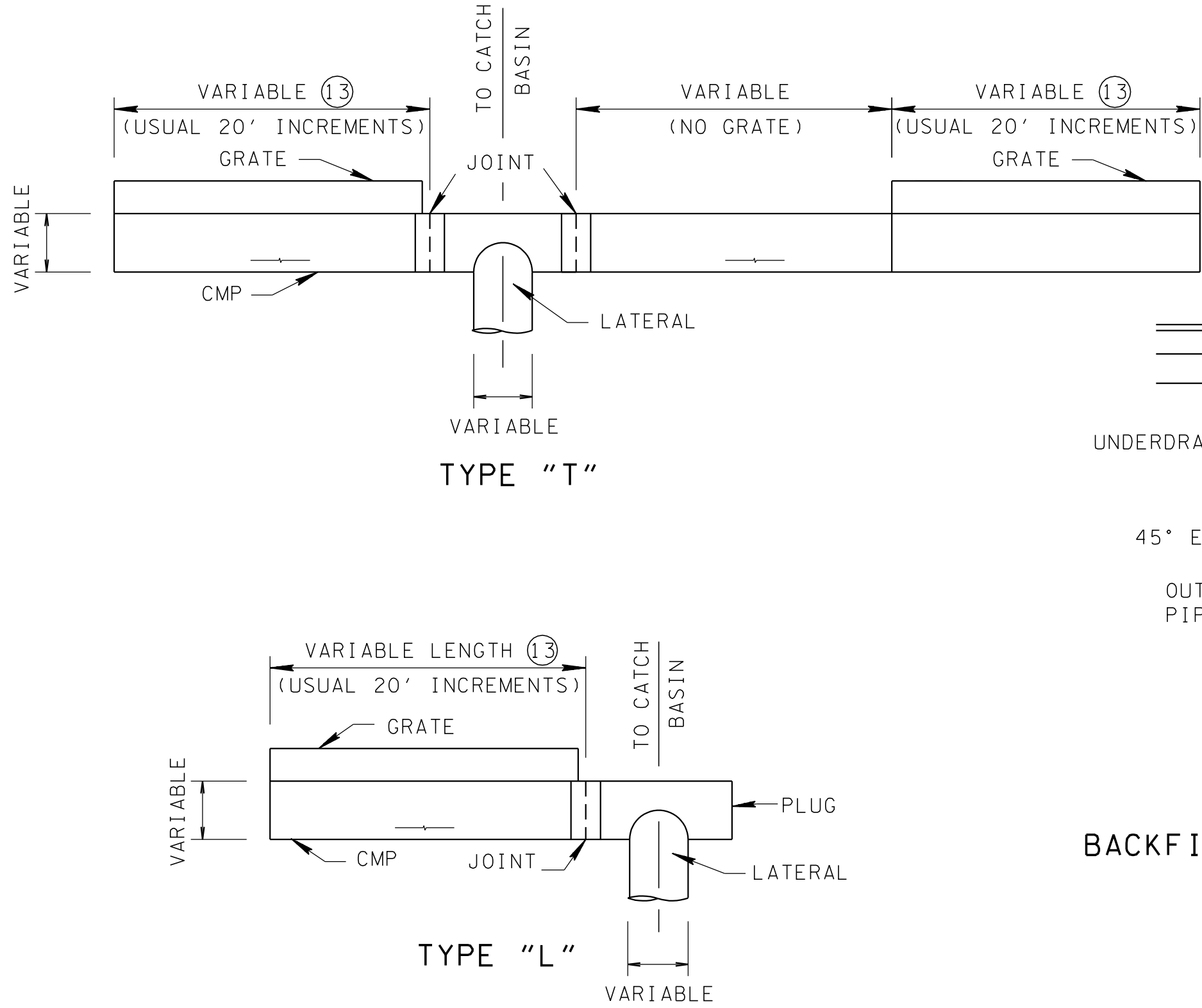
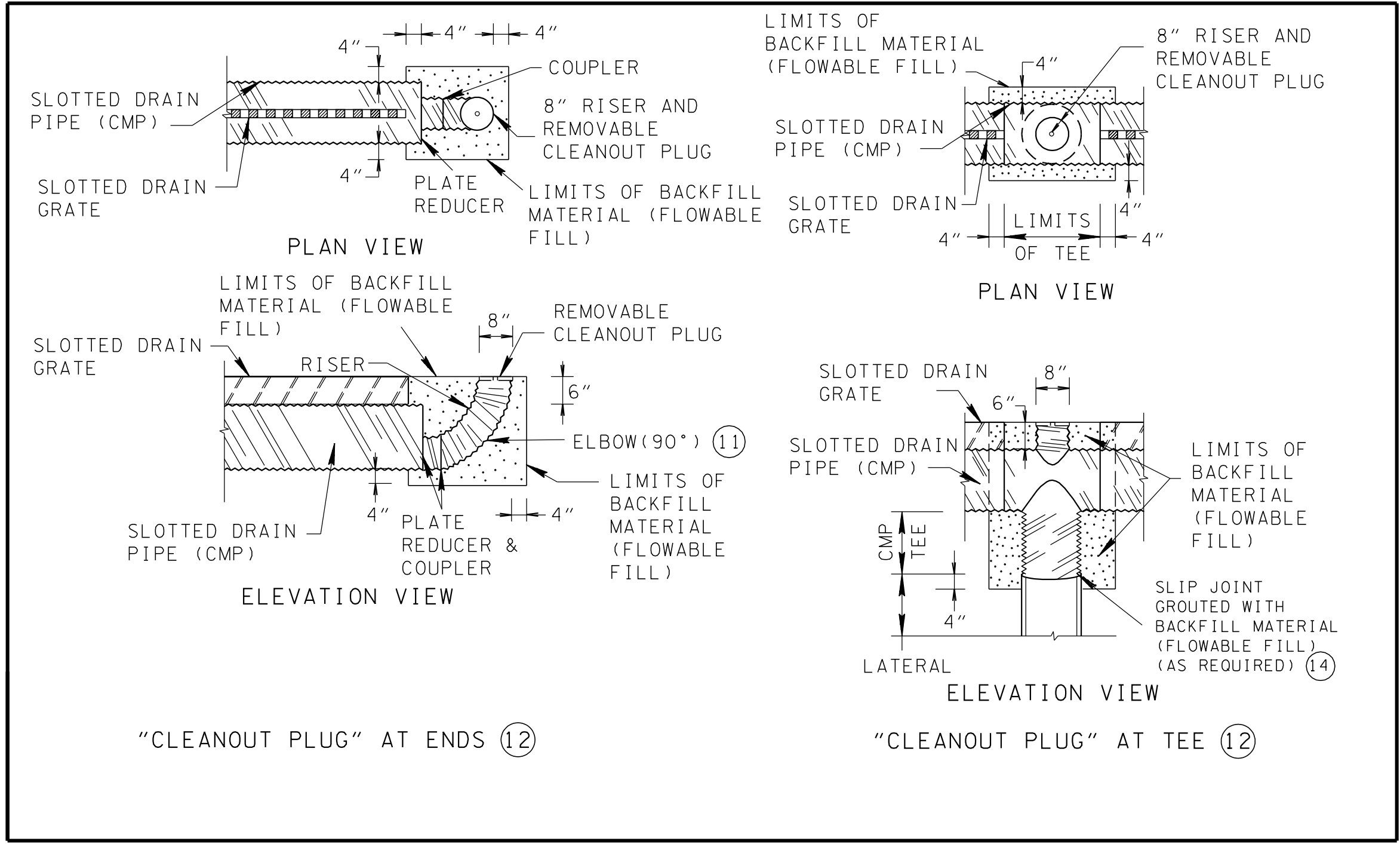
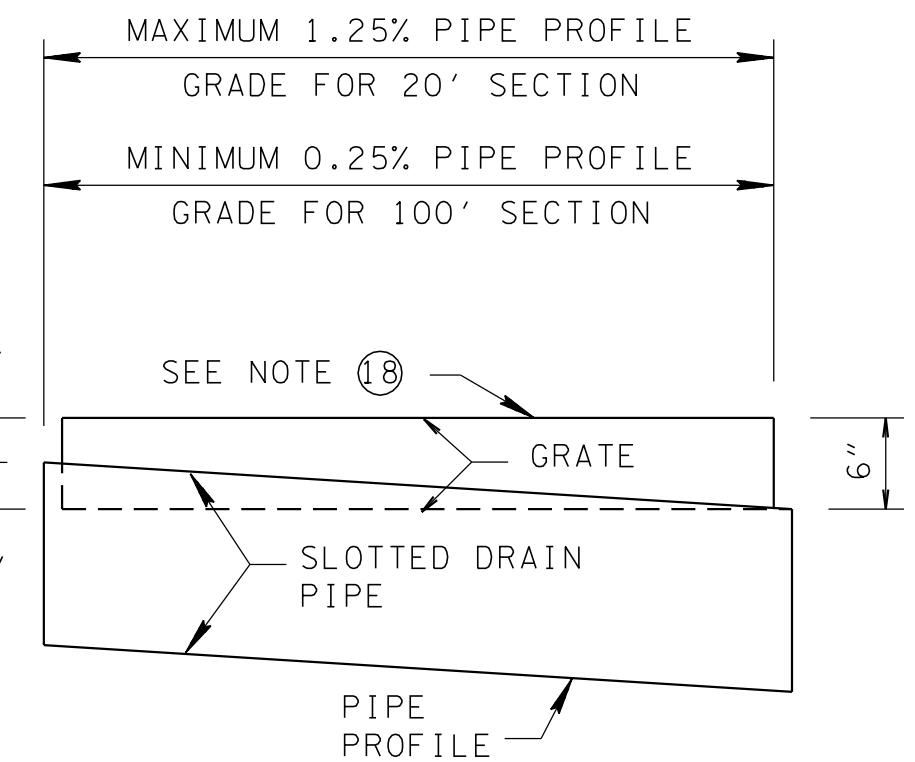
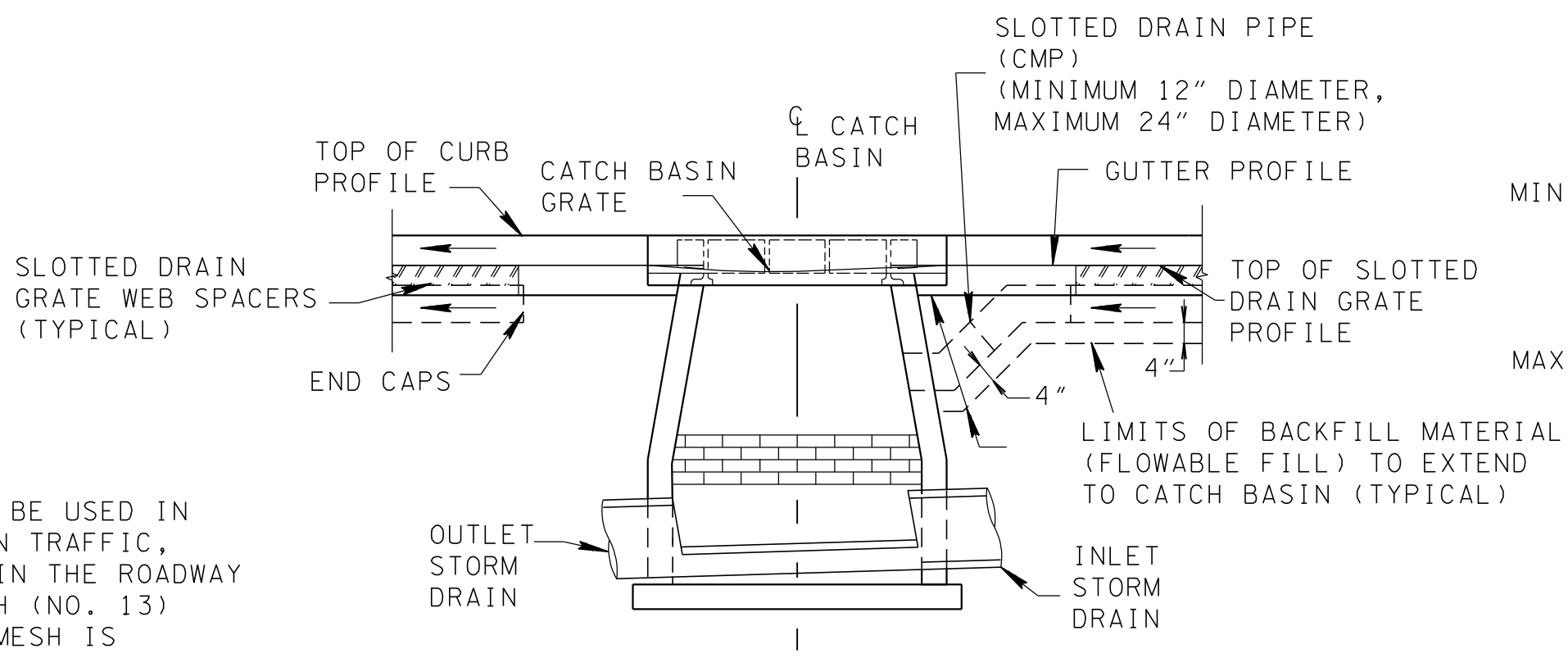


REV. 12-18-97: CHANGED REFERENCE THROUGHOUT DRAWING OF FLOWABLE MORTAR TO BACKFILL MATERIAL (FLOWABLE FILL).

REV. 5-27-01: GENERAL REVISION.



“HEEL GUARD” GRATE SHALL BE USED IN AREAS OF HEAVY PEDESTRIAN TRAFFIC, AS DESIGNATED ELSEWHERE IN THE ROADWAY PLANS. THE ONE-HALF INCH (NO. 13) STANDARD EXPANDED METAL MESH IS TO BE SHOP WELDED DIRECTLY TO THE SLOTTED DRAIN GRATING.



NOTE: SEE SHEET D-SLD-1 AND D-SLD-3 FOR ADDITIONAL DETAILS

NOT TO SCALE

MINOR REVISION -- FHWA APPROVAL NOT REQUIRED.

STATE OF TENNESSEE
DEPARTMENT OF TRANSPORTATION

SLOTTED DRAINS